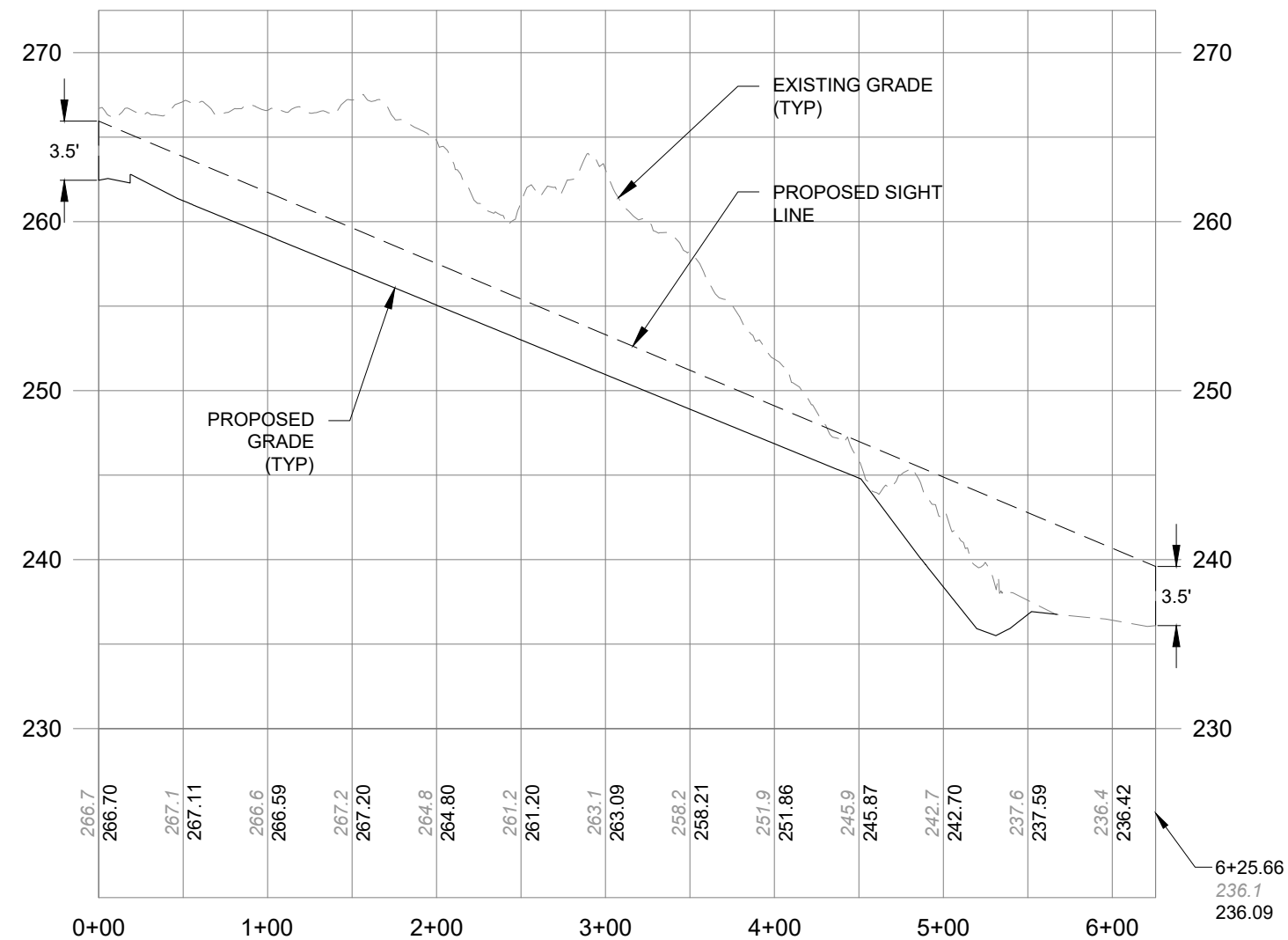


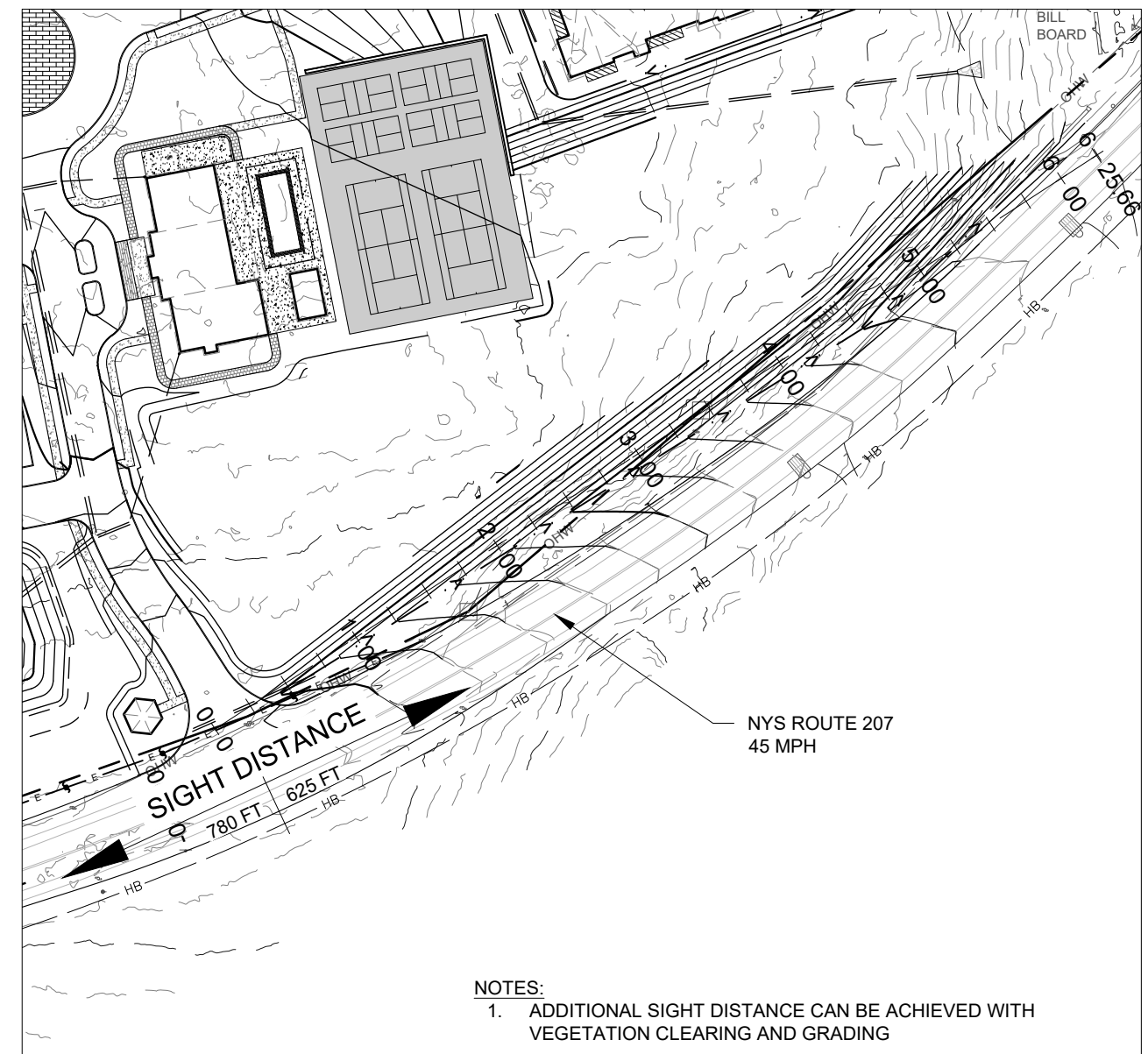
Appendix 5C-3 - Left Turn from Stop (3 Lanes Crossed)

| SPEED (MPH) | STOPPING DISTANCE (FT) |
|-------------|------------------------|
| 25 | 315 |
| 30 | 375 |
| 35 | 440 |
| 40 | 500 |
| 45 | 565 |
| 50 | 625 |
| 55 | 690 |



CROSS SECTION 1

SCALE: 1" = 100'



NOTES:

- ADDITIONAL SIGHT DISTANCE CAN BE ACHIEVED WITH VEGETATION CLEARING AND GRADING

PLAN VIEW

SCALE: 1" = 100'